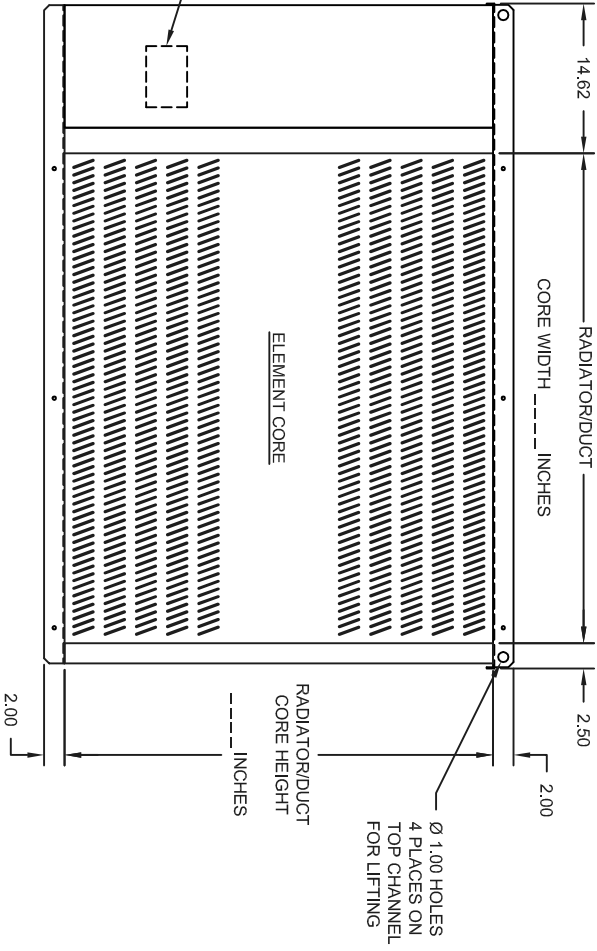
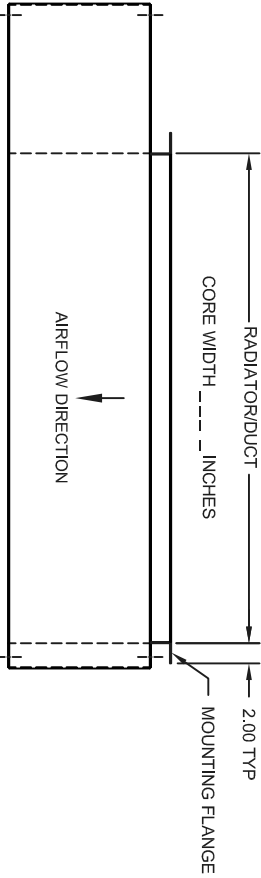
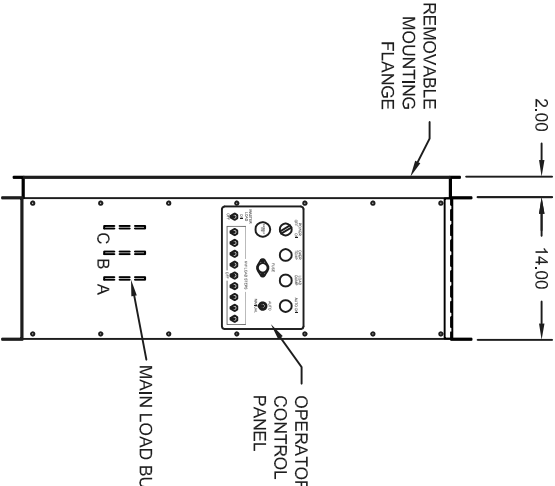
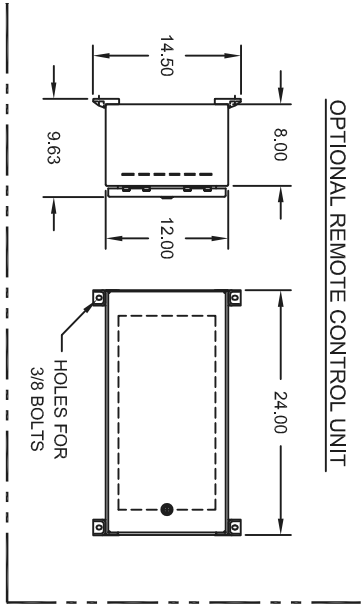


**OPTIONAL REMOTE CONTROL UNIT**

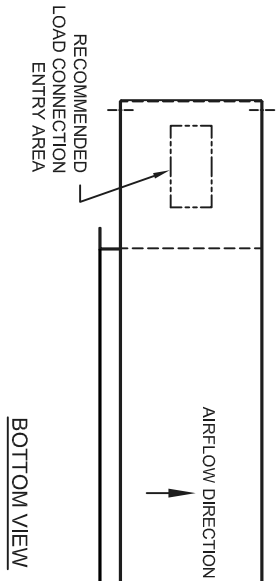


**RADIATOR DUCT MOUNT PART NUMBERING SYSTEM**

LD- \_\_\_\_\_ (KW)- \_\_\_\_\_ (VOLTS)- \_\_\_\_\_ (RES) \_\_\_\_\_ [WIDTH x HEIGHT]- \_\_\_\_\_ (OPTIONS)- \_\_\_\_\_

Type LD = Duct Mount  
 Capacity = KW  
 Voltage = 208, 240, 480, 600 VAC  
 Resolution = 25, 50 KW  
 Accessory Options = [A] Automatic Load Step Control  
 [T] Control Power Transformer  
 [R] Remote Operator Control Unit

EXAMPLE: LD-100-480-25-148 -421-AR = Radiator Duct Load Bank, 100 KW, 480 Volts AC, 25 KW Res, 48 inch Wide x 42 inch High core size, Automatic Load Step Control and Remote Operator Control Unit.



**BOTTOM VIEW**

THIS DRAWING IS PROPERTY OF LOAD BANKS DIRECT AND SHALL REMAIN SO WHILE IN USER'S POSSESSION. THE TECHNOLOGY SHOWN HERE IS STRICTLY PROPRIETARY AND IS NOT TO BE DISCLOSED TO ANY 3RD PARTY WITHOUT LOAD BANKS DIRECT PRIOR CONSENT.

**GENERAL NOTES:**  
 A. UNLESS OTHERWISE NOTED:  
 1. ALL DIMENSIONS ARE IN INCHES.  
 B. APPROXIMATE WEIGHT:  
 C. SEE ELECTRICAL SCHEMATIC FOR LOAD CAPACITY (KW) RATINGS, VOLTAGE RATINGS.

**Load Banks Direct**  
 www.LoadBanksDirect.com

TEXT	LOAD BANK, DUCT MOUNT		
DWG. NO.	LD-OL	REV.	-
DRAWN BY	JJF	CHECKD BY	MMP
DATE	8/2/13	SHEET	1 of 1
SIZE	A		