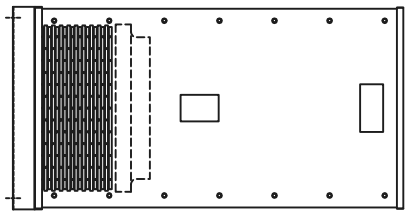


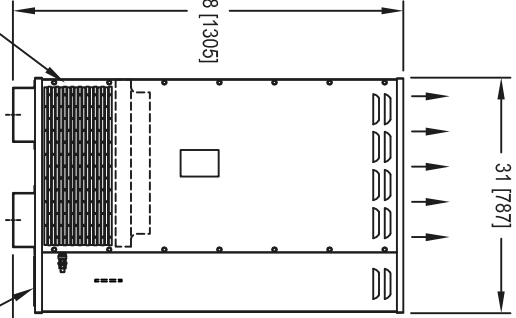
TOP VIEW

REAR VIEW

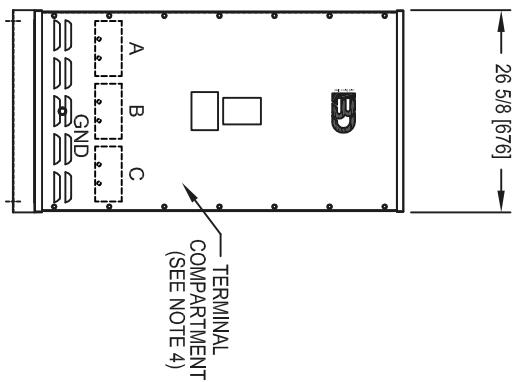
HOT AIR EXHAUST  
(SEE NOTE 3)



SIDE VIEW

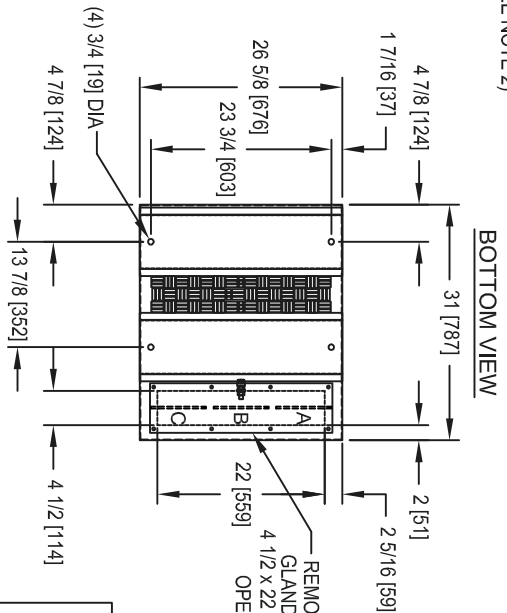


FRONT VIEW

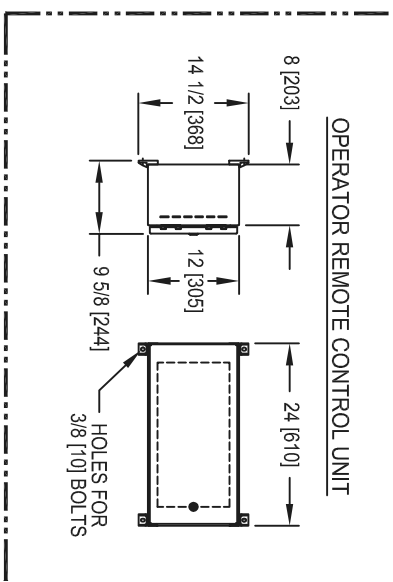


COLD AIR INTAKE  
BOTH SIDES & REAR  
(SEE NOTE 2)

BOTTOM VIEW



THIS DRAWING IS PROPERTY OF LOAD BANKS DIRECT AND SHALL REMAIN SO WHILE IN USER'S POSSESSION. THE TECHNOLOGY SHOWN HERE IS STRICTLY PROPRIETARY AND IS NOT TO BE DISCLOSED TO ANY 3RD PARTY WITHOUT LOAD BANKS DIRECT PRIOR CONSENT.



OPERATOR REMOTE CONTROL UNIT

RECOMMENDED MINIMUM CLEARANCES  
(SEE O & M MANUAL FOR INSTALLATION DETAILS)

- NOTE 1) 36" [914] ALL 4 SIDES FOR MAINTENANCE.
- NOTE 2) 36" - 48" [914-1219] ALL 4 SIDES FOR AIR INTAKE.
- NOTE 3) 12-14 FT [3658-4267] FOR TOP HOT AIR EXHAUST.
- NOTE 4) OUTDOOR WEATHERPROOF ENCLOSURE FOR BOTH NON-OPERATING AND OPERATING CONDITIONS.

GENERAL NOTES:

- A. UNLESS OTHERWISE NOTED: EXCEPT "xxxj" = mm.
- B. APPROX WEIGHT: 400 - 500 LBS [181-226 KG].
- C. SEE ELECTRICAL SCHEMATIC FOR LOAD CAPACITY (KV) RATINGS, VOLTAGE RATINGS, AND BLOWER MOTOR RATING (H.P.)



Load Banks Direct  
www.LoadBanksDirect.com

TEXT	LOAD BANK, 50 THRU 200KW	
DWG. NO.	LS50-200-OL	REV. -
DRAWN BY	JJF	CHECKD BY
	MMP	DATE
		2/26/13
		SHEET
		1 of 1
		SIZE
		A