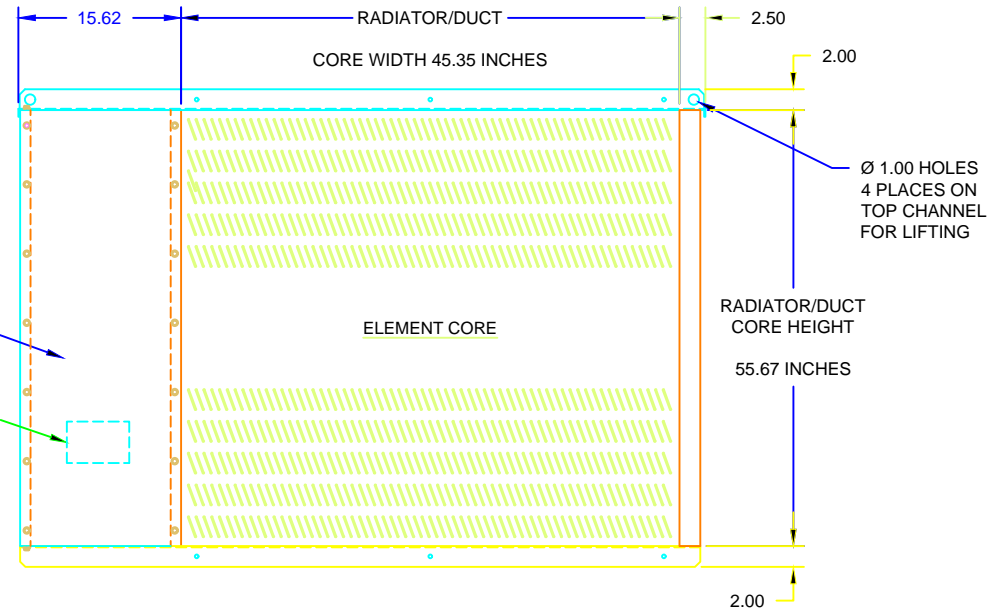
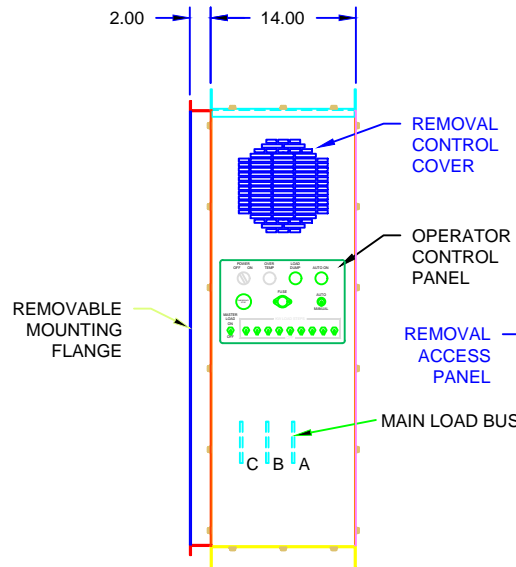
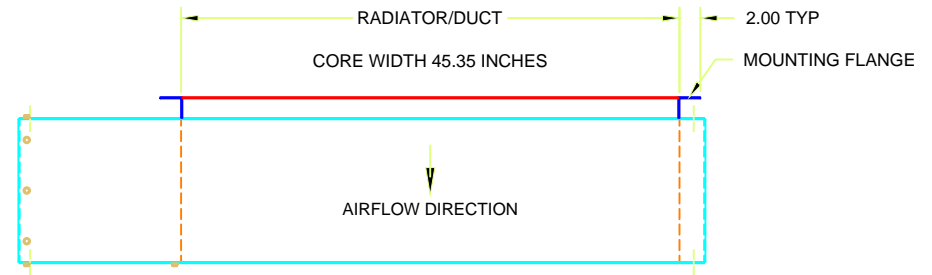
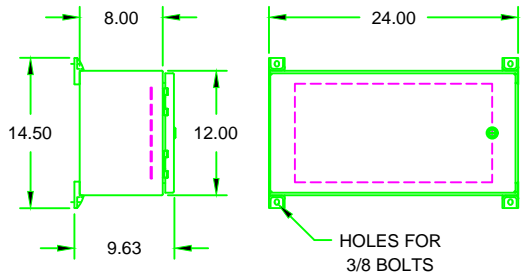


OPTIONAL REMOTE CONTROL UNIT

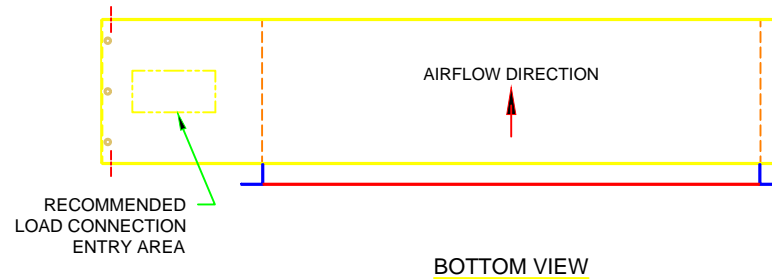


RADIATOR DUCT MOUNT PART NUMBERING SYSTEM

LD- LD- (KW)- 175 (VOLTS)- 480 (RES) 25 [WIDTH x HEIGHT]- 42-50 (OPTIONS)-

Type LD = Duct Mount
 Capacity = KW
 Voltage = 208, 240, 480, 600 VAC
 Resolution = 25, 50 KW
 Accessory Options = [A] Automatic Load Step Control
 [T] Control Power Transformer
 [R] Remote Operator Control Unit

EXAMPLE: LD-100-480-25-[48 -42]-AR = Radiator Duct Load Bank, 100 KW, 480 Volts AC, 25 KW Res, 48 inch Wide x 42 inch High core size, Automatic Load Step Control and Remote Operator Control Unit.



GENERAL NOTES:

- A. UNLESS OTHERWISE NOTED:
1. ALL DIMENSIONS ARE IN INCHES.
- B. APPROXIMATE WEIGHT:
- C. SEE ELECTRICAL SCHEMATIC FOR LOAD CAPACITY (KW) RATINGS, VOLTAGE RATINGS.



TEXT			
LOAD BANK, DUCT MOUNT			
DWG. NO.	REV.	SHEET	
LD175-480-25-42-50-OL	2	1 of 1	
DRAWN BY	CHK'D BY	DATE	SIZE
MWL	MMP	12/18/18	A

THIS DRAWING IS PROPERTY OF LOAD BANKS DIRECT AND SHALL REMAIN SO WHILE IN USER'S POSSESSION. THE TECHNOLOGY SHOWN HERE IS STRICTLY PROPRIETARY AND IS NOT TO BE DISCLOSED TO ANY 3RD PARTY WITHOUT LOAD BANKS DIRECT PRIOR CONSENT.

REV 2: Revised pictorially to show Removable Cover hardware. (7/31/17)
 REV 1: Dim 15.62 was 14.62. Added Removable Control Cover & Access Panel. (11/16/15)